

# Pineapple Girl

TRACK 01 - FUNK - 112 BPM - BINÄRES ACHELFEELING - 8 CHORUSSE - DAUER: 4'45

PETER WESPI ©2003

Musical notation for the first system, measures 1-4. It consists of two staves in treble clef with a key signature of two sharps (F# and C#) and a 4/4 time signature. The melody in the upper staff starts with a D7 chord and features a series of eighth and quarter notes with slurs and accents. The lower staff provides a bass line with similar rhythmic patterns and slurs.

Musical notation for the second system, measures 5-8. It consists of two staves in treble clef with a key signature of two sharps (F# and C#) and a 4/4 time signature. The melody in the upper staff starts with a G7 chord, followed by a D7 chord. The lower staff provides a bass line with similar rhythmic patterns and slurs.

Musical notation for the third system, measures 9-12. It consists of two staves in treble clef with a key signature of two sharps (F# and C#) and a 4/4 time signature. The melody in the upper staff features a repeating rhythmic pattern with A7 and G7 chords. The lower staff provides a bass line with similar rhythmic patterns and slurs.

Musical notation for the fourth system, measures 13-16. It consists of two staves in treble clef with a key signature of two sharps (F# and C#) and a 4/4 time signature. The melody in the upper staff features a repeating rhythmic pattern with A7, G7, and D7 chords. The lower staff provides a bass line with similar rhythmic patterns and slurs.

# Pineapple Girl - Info & Notizen

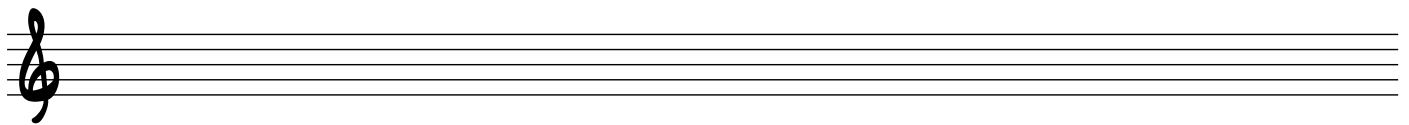
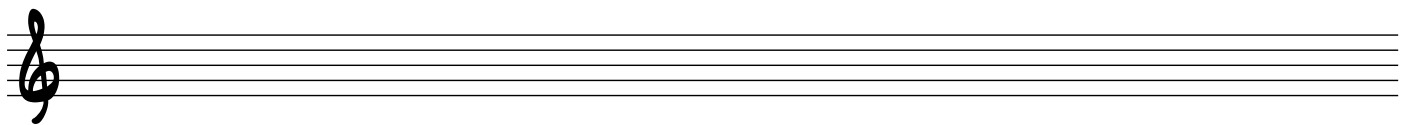
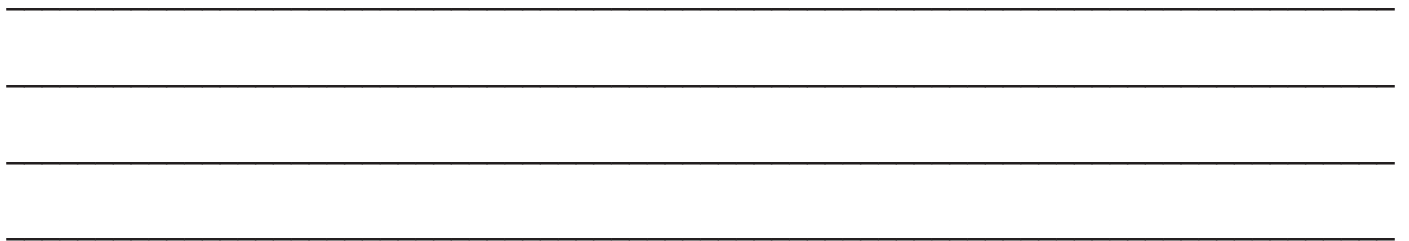
---

**Pineapple Girl** basiert auf dem Standard **Watermelon Man** von Herbie Hancock. Die Form von Pineapple Girl ist ein ausgedehnter Blues. In einen klassischen zwölftaktigen Blues wurden vier Takte eingeschoben. Es sind dies die Takte 9 bis 12 welche die selben Akkorde wie Takt 13 und 14 beinhalten.

**Zur Improvisation bieten sich folgende Möglichkeiten:**

- Grad 1**
- D Blues-Tonleiter (*Anhang Seite 23*)
  - D Blues-Tonleiter erweitert (*Anhang Seite 23*)
- Grad 2**
- D Blues-Tonleiter / erweitert mit Ton C# in Takt 9, 11 und 13
- Grad 3**
- Stufen bezogene Blues-Tonleitern / erweitert (*Anhang Seite 23*)
  - Stufen bezogene Kirchentonleitern (mixolydisch) (*Anhang Seite 19*)
  - Nur Akkord-Töne (*Anhang Seite 14*)
- Grad 4**
- D Blues-Tonleiter / erweitert mit Akkord-Ton als Ziel
  - Stufen bezogene Blues-Tonleitern / erweitert mit Akkord-Ton als Ziel
  - Kirchentonleitern (mixolydisch) mit Akkord-Ton als Ziel
  - Akkordton-Linien (Guide Tone Lines)
- Grad 5**
- Akkord-Töne mit Approachs (*Anhang Seite 29/30*)
  - Doppelte Akkordton-Linien
  - Mix

**Notizen**



# Pineapple Girl - Worksheet mit Akkordtönen (Kopiervorlage)

4/4

D7

F#m F#m F#m

5

G7

F#m D7 F#m

9

A7

G7 A7 G7

13

A7

G7 D7 F#m

# Pineapple Girl - Worksheet ohne Akkordtöne (Kopiervorlage)

System 1: Two staves in 4/4 time. The top staff has a treble clef and a 4/4 time signature. The bottom staff has a bass clef and a 4/4 time signature. The first measure contains the chord **D7**. The remaining three measures are empty.

System 2: Two staves in 4/4 time. The top staff has a treble clef and a 4/4 time signature. The bottom staff has a bass clef and a 4/4 time signature. The first measure contains the chord **G7**. The second measure is empty. The third measure contains the chord **D7**. The fourth measure is empty.

System 3: Two staves in 4/4 time. The top staff has a treble clef and a 4/4 time signature. The bottom staff has a bass clef and a 4/4 time signature. The first measure contains the chord **A7**. The second measure contains the chord **G7**. The third measure contains the chord **A7**. The fourth measure contains the chord **G7**.

System 4: Two staves in 4/4 time. The top staff has a treble clef and a 4/4 time signature. The bottom staff has a bass clef and a 4/4 time signature. The first measure contains the chord **A7**. The second measure contains the chord **G7**. The third measure contains the chord **D7**. The fourth measure is empty. The system ends with a double bar line.