

Pineapple Girl

TRACK 01 - FUNK - 112 BPM - BINÄRES ACHELFEELING - 8 CHORUSSE - DAUER: 4'45

PETER WESPI ©2003

Musical notation for the first system, measures 1-2. Treble and bass clefs, 4/4 time signature, key signature of two flats. Chord F7 is indicated above the first measure. The melody features a half note G4, quarter notes A4, Bb4, and C5, followed by a dotted quarter note Bb4 and an eighth note A4. The bass line features a half note G3, quarter notes A3, Bb3, and C4, followed by a dotted quarter note Bb3 and an eighth note A3.

Musical notation for the second system, measures 3-4. Treble and bass clefs, 4/4 time signature, key signature of two flats. Chords Bb7 and F7 are indicated above the first and third measures respectively. The melody continues with a half note G4, quarter notes A4, Bb4, and C5, followed by a dotted quarter note Bb4 and an eighth note A4. The bass line continues with a half note G3, quarter notes A3, Bb3, and C4, followed by a dotted quarter note Bb3 and an eighth note A3.

Musical notation for the third system, measures 5-6. Treble and bass clefs, 4/4 time signature, key signature of two flats. Chords C7, Bb7, C7, and Bb7 are indicated above the first, second, third, and fourth measures respectively. The melody features eighth notes G4, A4, Bb4, and C5, followed by quarter notes Bb4 and A4. The bass line features eighth notes G3, A3, Bb3, and C4, followed by quarter notes Bb3 and A3.

Musical notation for the fourth system, measures 7-8. Treble and bass clefs, 4/4 time signature, key signature of two flats. Chords C7, Bb7, and F7 are indicated above the first, second, and third measures respectively. The melody features eighth notes G4, A4, Bb4, and C5, followed by quarter notes Bb4 and A4. The bass line features eighth notes G3, A3, Bb3, and C4, followed by quarter notes Bb3 and A3.

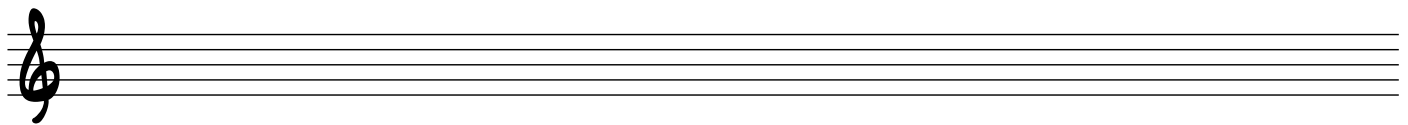
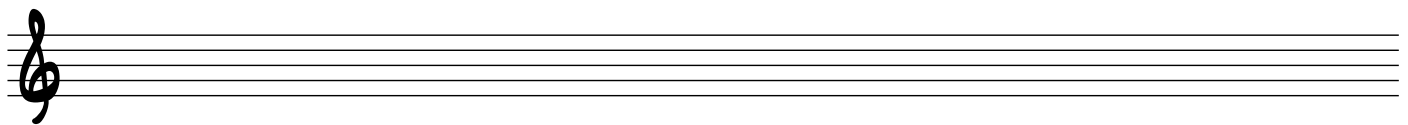
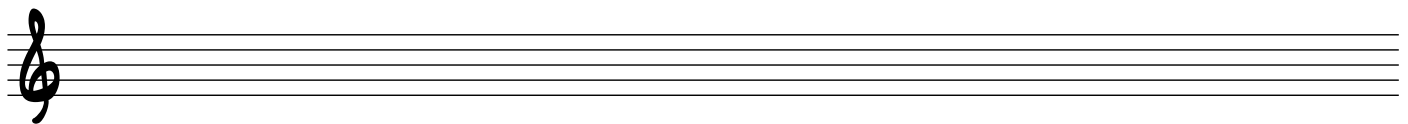
Pineapple Girl - Info & Notizen

Pineapple Girl basiert auf dem Standard **Watermelon Man** von Herbie Hancock. Die Form von Pineapple Girl ist ein ausgedehnter Blues. In einen klassischen zwölfaktigen Blues wurden vier Takte eingeschoben. Es sind dies die Takte 9 bis 12 welche die selben Akkorde wie Takt 13 und 14 beinhalten.

Zur Improvisation bieten sich folgende Möglichkeiten:

- Grad 1**
- F Blues-Tonleiter (*Anhang Seite 23*)
 - F Blues-Tonleiter erweitert (*Anhang Seite 23*)
- Grad 2**
- F Blues-Tonleiter / erweitert mit Ton E in Takt 9, 11 und 13
- Grad 3**
- Stufen bezogene Blues-Tonleitern / erweitert (*Anhang Seite 23*)
 - Stufen bezogene Kirchentonleitern (mixolydisch) (*Anhang Seite 19*)
 - Nur Akkord-Töne (*Anhang Seite 14*)
- Grad 4**
- F Blues-Tonleiter / erweitert mit Akkord-Ton als Ziel
 - Stufen bezogene Blues-Tonleitern / erweitert mit Akkord-Ton als Ziel
 - Kirchentonleitern (mixolydisch) mit Akkord-Ton als Ziel
 - Akkordton-Linien (Guide Tone Lines)
- Grad 5**
- Akkord-Töne mit Approachs (*Anhang Seite 29/30*)
 - Doppelte Akkordton-Linien
 - Mix

Notizen



Pineapple Girl - Worksheet mit Akkordtönen (Kopiervorlage)

4/4

F7

B \flat 7

B \flat 7

B \flat 7

B \flat 7

B \flat 7

F7

B \flat 7

C7

B \flat 7

C7

B \flat 7

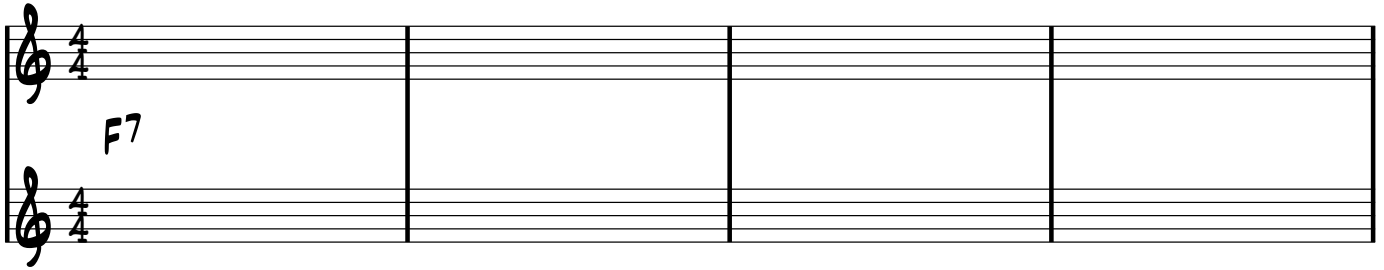
C7

B \flat 7

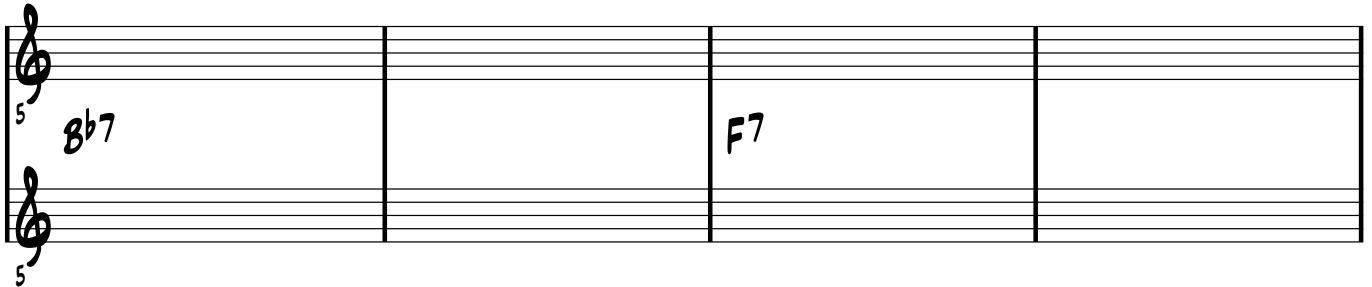
F7

B \flat 7

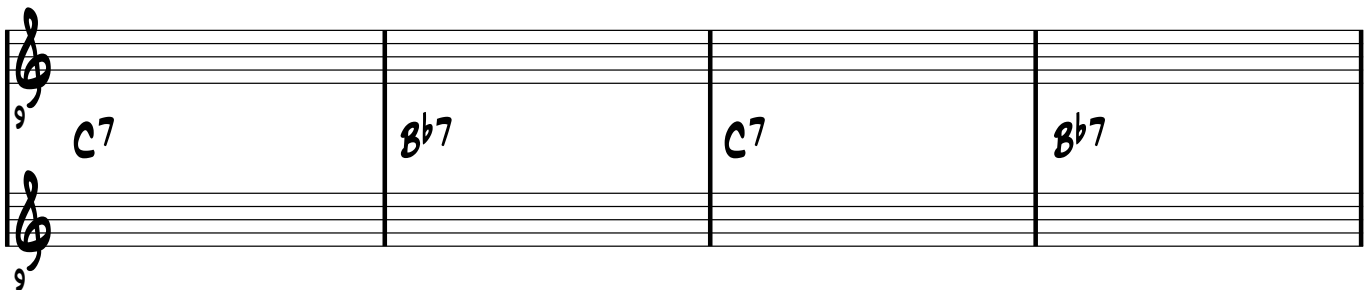
Pineapple Girl - Worksheet ohne Akkordtöne (Kopiervorlage)



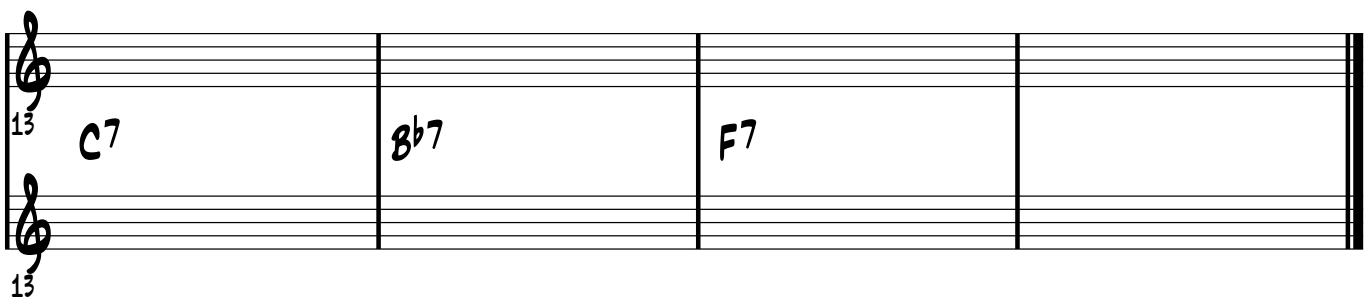
Musical staff system 1, 4/4 time signature. Treble clef. Chord F7 is written above the first measure.



Musical staff system 2, 4/4 time signature. Treble clef. Chord Bb7 is written above the first measure, and chord F7 is written above the third measure.



Musical staff system 3, 4/4 time signature. Treble clef. Chords C7, Bb7, C7, and Bb7 are written above the first, second, third, and fourth measures respectively.



Musical staff system 4, 4/4 time signature. Treble clef. Chords C7, Bb7, and F7 are written above the first, second, and third measures respectively. A double bar line is at the end of the fourth measure.